

Madame Tui

GRAND CAFÉ CHINOIS

For
Corporate Events

Index

About Us	P.2
Event Spaces	P.3 – P.9
Floor Plan	P.10
Food Creations	P.11 – P.12
Menu Customisation – Vegetarian	P.13
Menu Customisation – Gluten Free	P.14
Wine & Cocktail Creations	P.15
Art & Ambiance	P.16
What Your Event Might Look Like	P.17 – P.23
Special Attractions	P.24
Awards & Recognition	P.25
How to get to Madame Fù	P.26



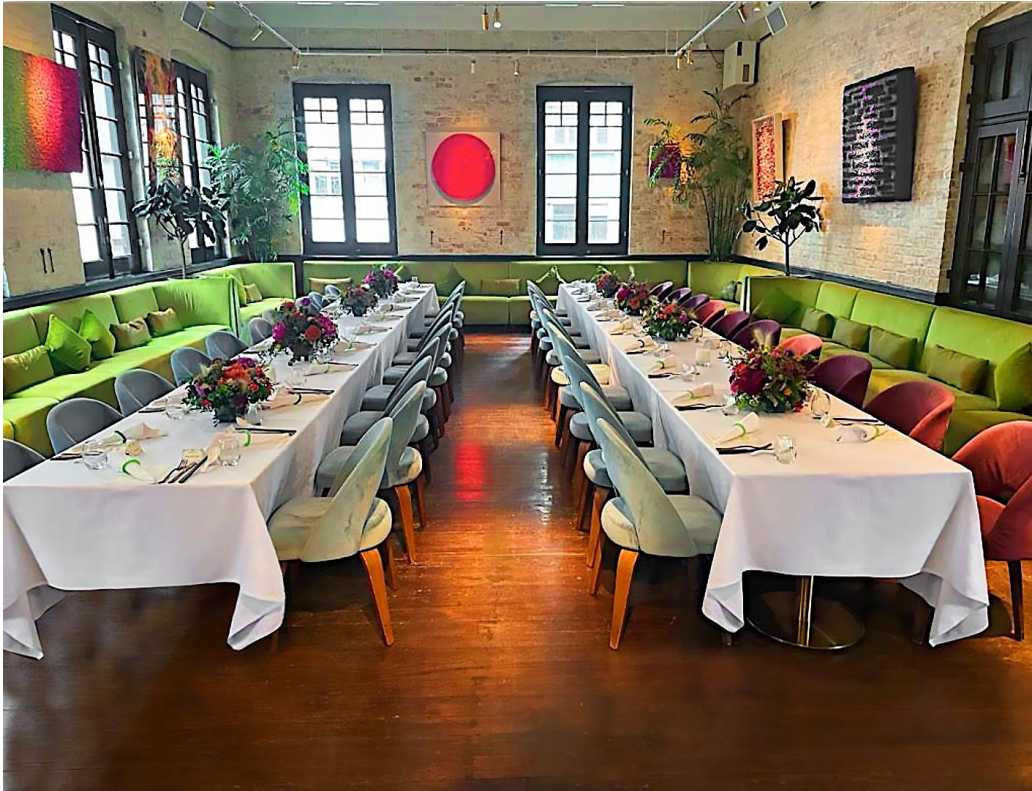
About Us



Located in the heart of Tai Kwun in Central, Madame Fù brings back the experience and ambience of a bygone era set in our beautifully restored colonial building.

With 6 rooms to choose from and 2 Verandahs, Madame Fù can cater to any clients' events. Whether it is an intimate dinner for 8 or a cocktail function for over 300, our experienced events team can create a bespoke occasion for your party, one that will truly impress.

Event Spaces



GRAND CAFÉ

As our Fine Dining Room, the Café's grand dimensions, elongated windows, and tall timber ceiling perfectly frame its colonial elegance. The room's relaxing palette of greens perfectly compliment its dark teak floors, marble tables, and original brick walls – where Madame Fù's eclectic collection of Chinese contemporary art pieces are on display. No matter the time of day, The Grand Café is the perfect location of an exquisite fine dining experience.

Seating Capacity: 80 guests

Cocktail Event Capacity: 100 guests

**Please note: All existing floor plans can be modified based on client's needs*

Event Spaces



FÙ BAR

Fu Bar's dramatic bar spans the full width of the room. Framed by emerald velvet curtains, this space is ideal for a casual lunch, an after-dinner drink, cocktail reception, corporate dinner, workshop, staff training or media launch. The walls pay homage to Hong Kong's past with an expressive art display. Fù Bar comes alive at night as the perfect venue to settle in and listen to the DJ setting the mood.

Seating Capacity: 50 guests
Cocktail Event Capacity: 70 guests

**Please note: All existing floor plans can be modified based on client's needs*

Event Spaces



WHISKY LOUNGE

Behind the elegant golden door you will find our Whisky Lounge. Amber lighting sets the scene with large armchairs and velvet banquettes to ornately match the rich Persian carpets. Enjoy your experience as you admire iconic paintings by Konstantin Bessmertny. This room is ideal for unique pairings of distiller edition dinners, whisky tasting event, intimate private corporate events, annual dinner, meeting with clients, team building & party that leave a lasting impression on clients and colleagues alike.

Seating Capacity: 26 guests
Cocktail Event Capacity: 35 guests

**Please note: All existing floor plans can be modified based on client's needs*

Event Spaces



PINK ROOM

Inspired by India Mahdavi's iconically designed London restaurant Sketch, the Pink Room is an ode to the stylish women of Hong Kong. The millennial pink salon offers private booth seating for elegant social lunches, afternoon teas, media product launch and intimate team building lunches or dinners. It offers a relaxed yet professional atmosphere where colleagues can bond outside the office.

Seating Capacity: 18 guests
Cocktail Event Capacity: 25 guests

**Please note: All existing floor plans can be modified based on client's needs*

Event Spaces



THE ARTIST

Designed for exclusive tastings, pairing dinners and intimate dining experiences. Seat up to twelve along the elongated dining table while you admire the unique work of Hong Kong's 1960s autodidact painter, Luis Chan, as it reflects into the room's dramatic Venetian mirrored wall. This room is ideal for a corporate lunch & dinner or an executive meeting.

Seating Capacity: 12 guests

**Please note: All existing floor plans can be modified based on client's needs*

Event Spaces



THE LIBRARY

Madame Fù's library houses an extensive book and magazine collection on Design, Fashion, Travel and the Arts. Its ensconcing Chesterfield sofas offer a quiet retreat from the hustle and bustle, making it the perfect spot to hide out for a quiet lunch or enjoy a peaceful afternoon tea. The Library is our baroque heaven for intimate dinners, business meeting & business lunch with clients.

Seating Capacity: 8 guests

**Please note: All existing floor plans can be modified based on client's needs*

Event Spaces



The Red & Blue Verandahs' Floor Plan*

THE RED & BLUE VERANDAHS

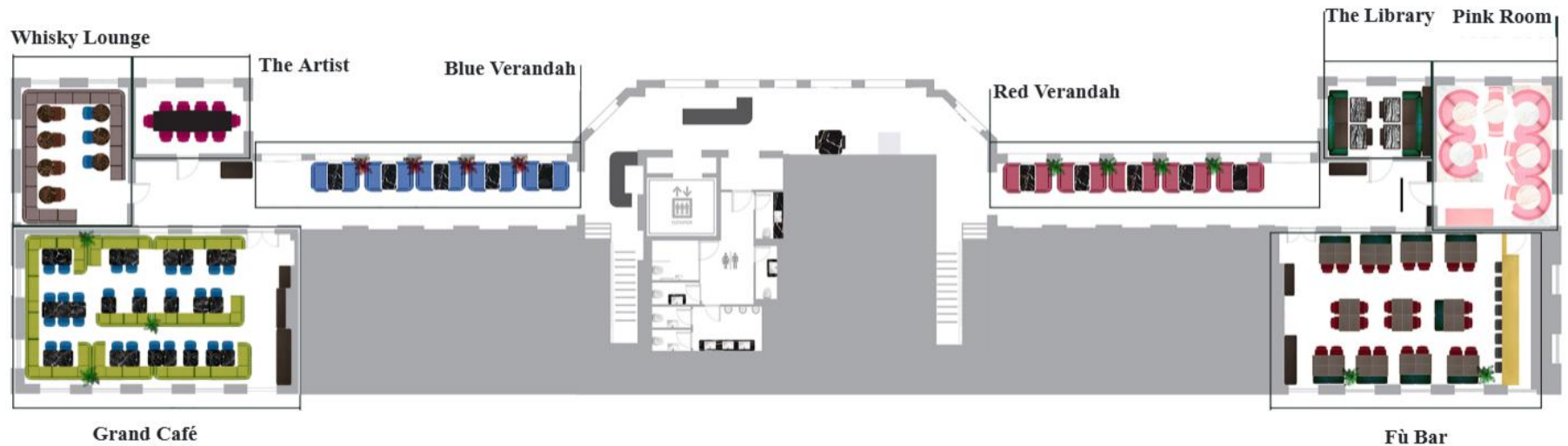
Madame Fù verandahs offer landmark colonial grandeur in a modern context. The two sprawling terraces overlook Tai Kwun's Central Parade Ground – set to stage a regular program of concerts, luxury shows, and seasonal events, making it the perfect spot to perch for lunch, a leisurely afternoon High Tea, a cocktail reception for corporate events, or an after dinner aperitif. Lit by stunning lamps crafted out of Hermes scarves, the Red & Blue Verandahs offer luscious, chaise lounge seating in a beautiful outdoor setting adorned with exquisite flora and fauna.

Seating Capacity: 20 guests depending on setup

**Please note: All existing floor plans can be modified based on client's needs*



Floor Plan



West Wing

Seating Capacity: 138 guests
Cocktail Event Capacity: 150 guests

Grand Café

Seating Capacity: 80 guests
Cocktail Event Capacity: 100 guests
Microphone + projector can be provided

Whisky Lounge

Seating Capacity: 26 guests
Cocktail Event Capacity: 35 guests

The Artist

Seating Capacity: 12 guests

East Wing

Seating Capacity: 96 guests
Cocktail Event Capacity: 150 guests

Fù Bar

Seating Capacity: 50 guests
Cocktail Event Capacity: 70 guests
Microphone + projector can be provided

Pink Room

Seating Capacity: 18 guests
Cocktail Event Capacity: 25 guests

The Library

Seating Capacity: 8 guests

Food Creations

Our exquisite Chinese cuisine is artfully crafted to deliver the quintessential Madame Fù experience to every guest, presenting modern Chinese delicacies with a delightful twist. Spanning from time-honored family-style feasts to sleek contemporary individual plates, each creation exudes its own elegant charm, weaving together a well-rounded menu tailored for all occasions.

Delectable Chinese dishes feature premium ingredients reimagined contemporarily.





Our handcrafted dim sums are prepared by seasoned chefs each dawn for unparalleled freshness.



Our skilful Cantonese Barbeque chef, with more than 20 years of culinary experience, he has engraved "perfectionism" into every step of his barbecue.



Beyond savoury bites, our pastry combines Chinese elements with French patisserie, creating sweets that merge Eastern charm and Western refinement.

Menu Customisation



Vegetarian & Vegan

Indulge in mouthwatering Chinese cuisine with our carefully crafted menu, featuring an abundant selection of *vegetarian & vegan dishes* ideal for group get-togethers—ensuring every guest, including those with special dietary requirements, enjoys a satisfying dining experience.



Menu Customisation



Gluten Free

We also offer a thoughtful range of *gluten-free options*, all crafted to maintain authentic flavours, and our experienced team stands ready to settle the successful event for you, ensuring every guest, including those with special dietary requirements, can relish a truly satisfying and worry-free dining experience.

Wine & Cocktail Selections



Pair our events menu with drinks from our hand-crafted event wine list, ranging from the finest old-world wines to new world wine, you'll find a bottle suitable for all guests.



Alternatively, if you are looking to get the party started, we have created the ultimate free flow drinks package with a wide selection of drinks to enjoy.

Art & Ambiance

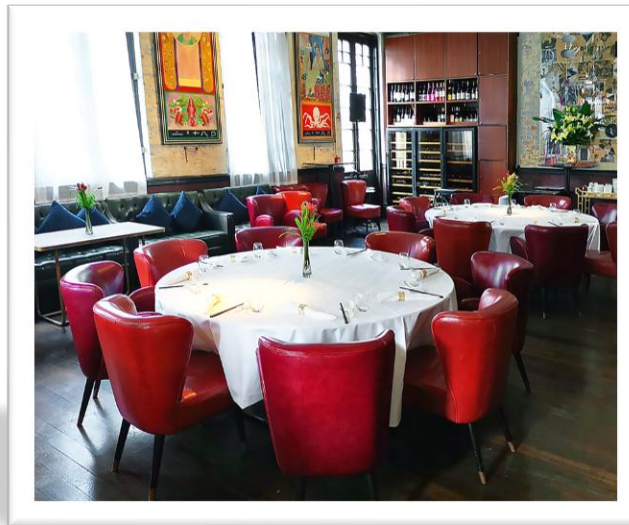


Every room is an epitome of extraordinary artistic craftsmanship, bringing together selected art treasures from major galleries around the world. Various installation arts gracefully surround the entire restaurant space, showcasing unique aesthetics everywhere.

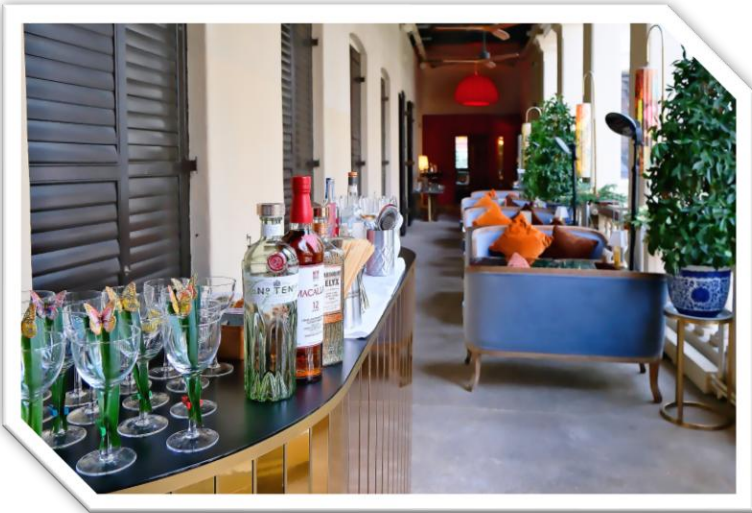
Complementing these remarkable artistic treasures, our event venues strike a harmonious balance between serenity and luxury, crafting the perfect backdrop for moments of relaxation and meaningful connection.

How Your Event Might Look Like

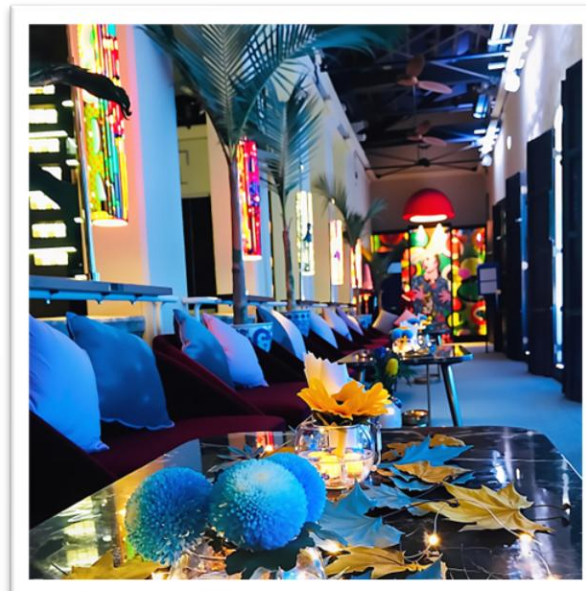
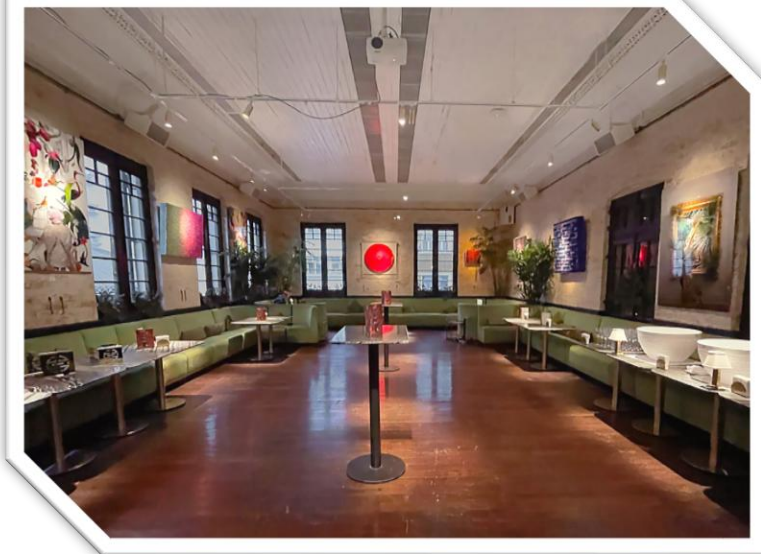
Business Lunch or Dinner



How Your Event Might Look Like



Cocktail Reception

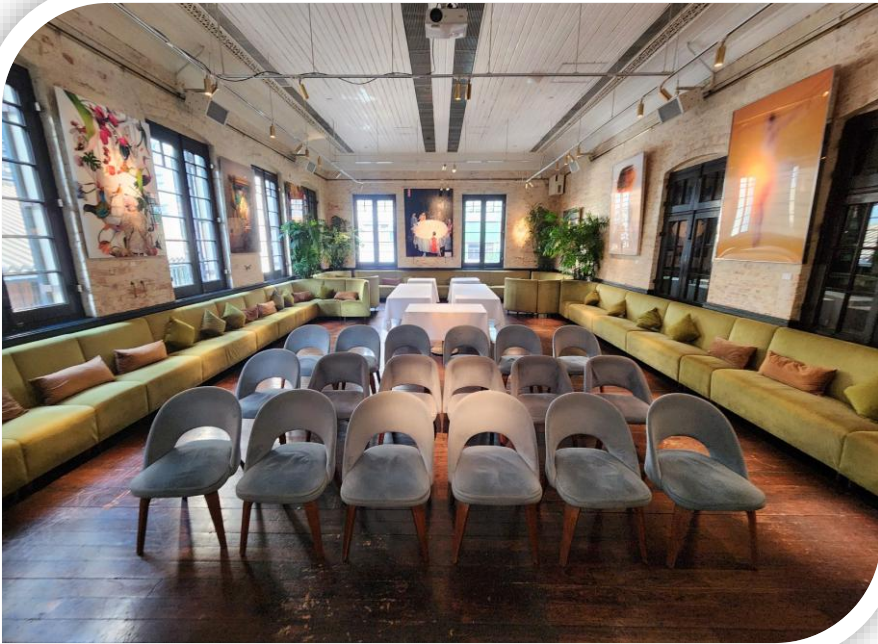


How Your Event Might Look Like

Media Launch / Award Ceremony



How Your Event Might Look Like



Seminar or workshop



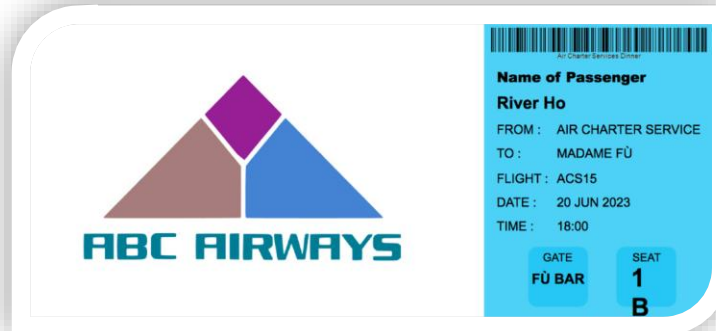
How Your Event Might Look Like



Custom made floor lamps on The Verandahs



Signage Design



Bespoke Table Cards



Bespoke Menu Design

How Your Event Might Look Like



Bespoke Menu Design Examples



How Your Event Might Look Like



Welcoming Reception
Desk Set-up



Live Music
Performance



Champagne Tower

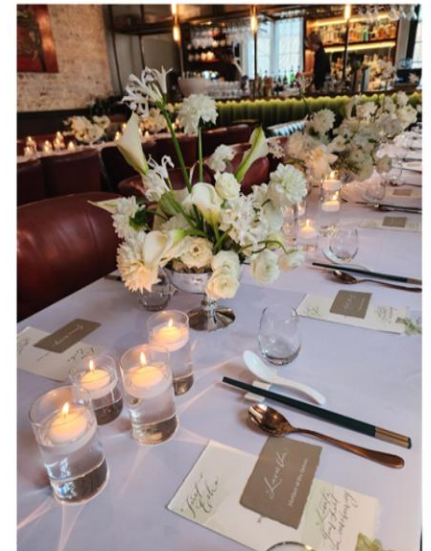


Table Flower
Arrangement

Special Attractions

300+

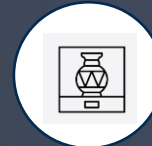
Our largest spaces, the East and West Wings, can accommodate up to 300 guests. 6 of our rooms of different sizes with a unique theme and style, making them perfect for various event purposes



Our highly experienced and professional server & event team boasts a proven track record of executing countless successful events, paired with carefully tailor-made menus to align with any requirements of every event



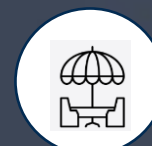
We offer personalized customizable menu services, exclusively planned by our professional chefs. Regardless of your guests' special dietary needs—such as vegetarian, gluten-free & allergen avoidance



Extensive art displays in each venue space whilst you dine in style spanning across the entire 3rd floor of the old police headquarters, Madame Fù offers a unique dining space in an artistic ambience



Professional bar team specializes in curating drink packages tailored to your specific event type, and can even craft bespoke cocktails infused your brand elements—adding a unique touch that elevates entire event experience



Verandahs are lit by stunning lamps crafted out of Hermès scarves; they illuminate lush chaise lounge seating amidst exotic flora. Relax on our beautiful verandahs, and escape the city's hustle & bustle



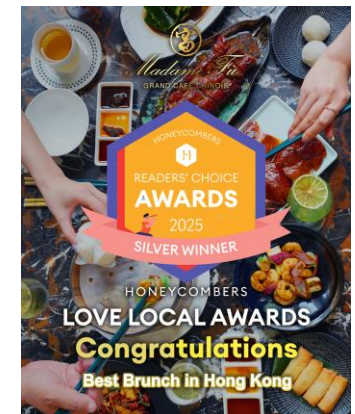
Our venue has a professional audio system: microphones, quality speakers and projector, ideal for diverse events with solid support



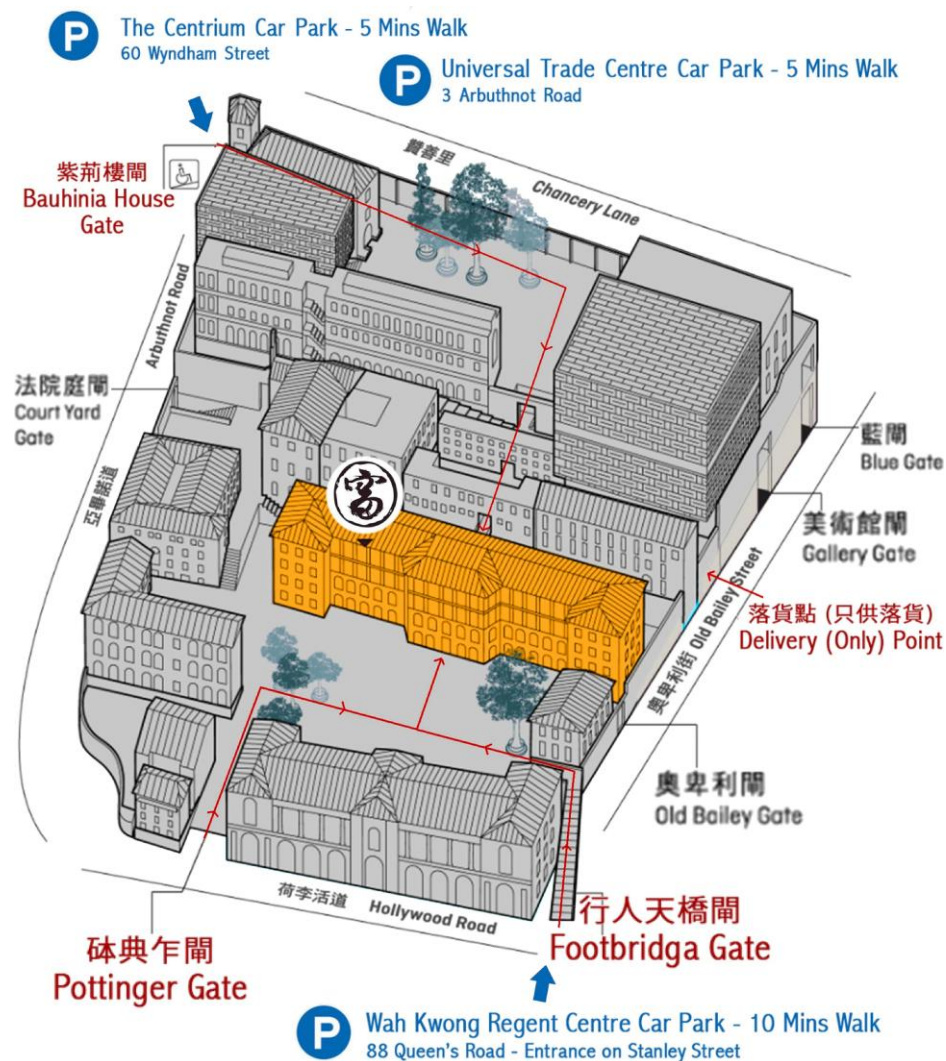
Located in one of the most popular sites in Central - Tai Kwun is a HK's Heritage Compound, colonial-style buildings with over 180 years of history, blending arts, heritage, culture and lifestyle together

Awards & Recognition

- ❖ Best of the Best MASTERCHEF Recommendation Restaurant 2024 & 2025
- Asian Art of Cuisine Society
- ❖ Quality Tourism Services 2024 & 2025
- Hong Kong Quality Tourism Services Association
- ❖ The Best Cantonese Restaurant Of The Year
- Hong Kong Foodie Times 2025
- ❖ Best Restaurant For Out of Towners 2025 - Silver -
SASSY Hong Kong
- ❖ 2025 Best Hong Kong Brunch
- Honey Combers
- ❖ The Best Hong Kong Cocktail Bar 2024
- RBHK
- ❖ Hong Kong's five most romantic restaurants 2025
- Time Out
- ❖ 2025 - 2026 Quality Wedding Merchant Scheme



How To Get To Madame Tù



- Located in one of the most popular sites in Central – 3rd floor of the Barrack Block Tai Kwun.
- Bordered on three sides by Old Bailey Street, Hollywood Road and Arbuthnot Road, while Chancery Lane runs along the southern (upper) prison wall.
- The Central Mid-Levels Escalator is connected to the compound by a footbridge constructed at the intersection of Hollywood Road and Old Bailey Street in order to provide easier access to the site



Madame Fu

GRAND CAFÉ CHINOIS

For more information,
please contact our event consultants.

Tel : +852 2114 2118

WhatsApp : +852 9632 1260

Email : events@madamefu.com.hk

Address : 3/F, Barrack Block, Tai Kwun,
No. 10 Hollywood Road, Central, Hong Kong

Website : www.madamefu.com.hk



Website



WhatsApp